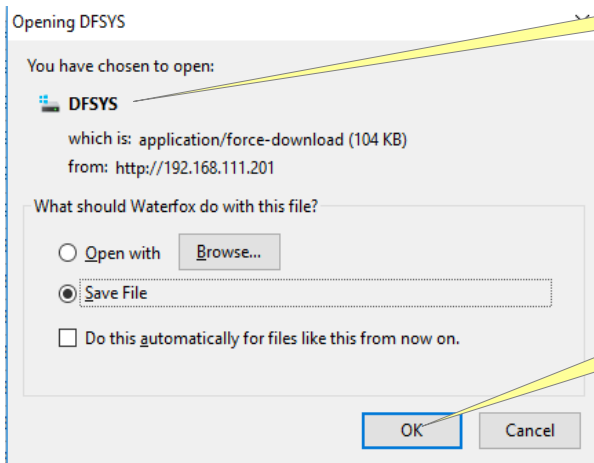


6. Click here...

You will see something like this:

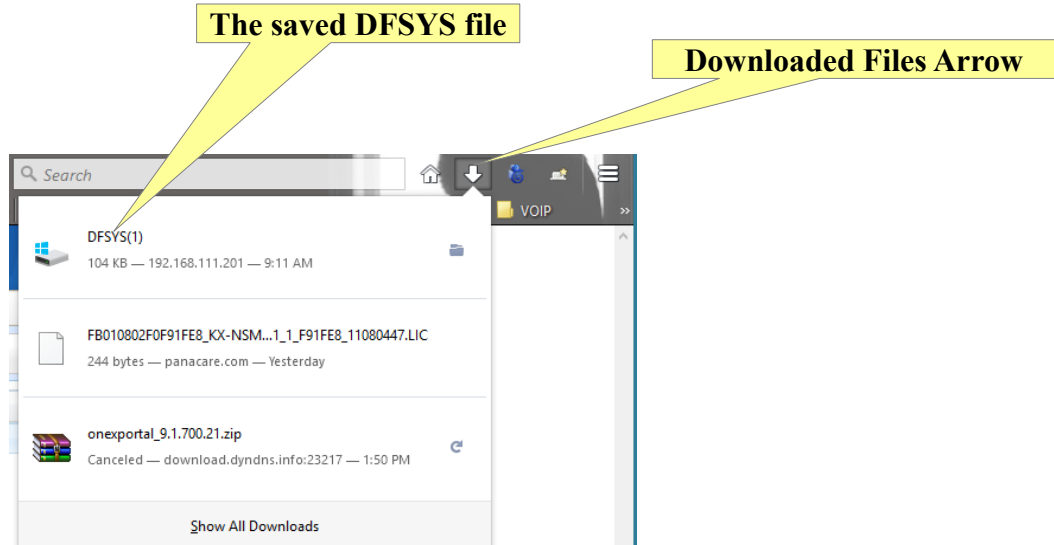


Note: The correct File

7. Click here...

I am using Windows 10 with the Waterfox/Firefox browser to program my NS700.

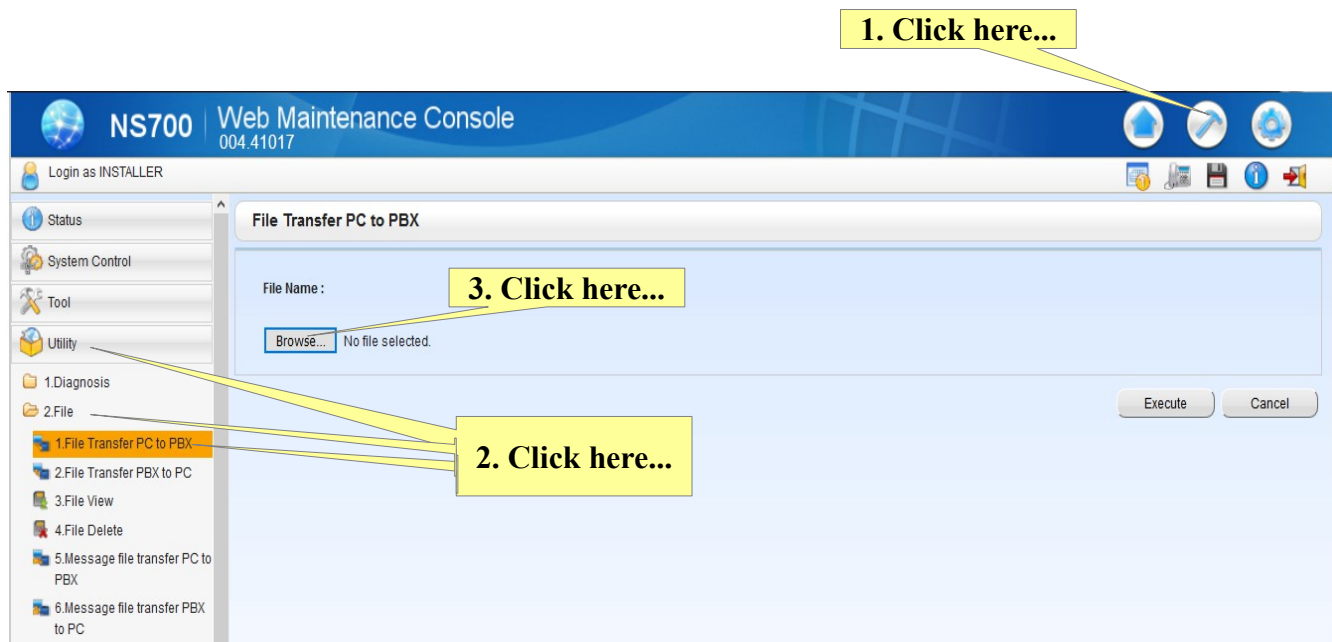
If you use a different operating system and or browser, you may see a different screen.
If so, it will be up to you to determine how and where to access the saved DFSYS file.



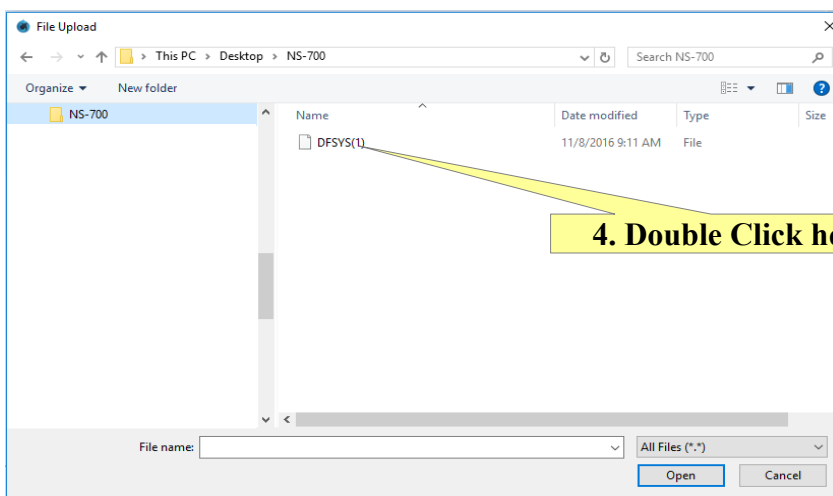
Firefox Browser Download Area

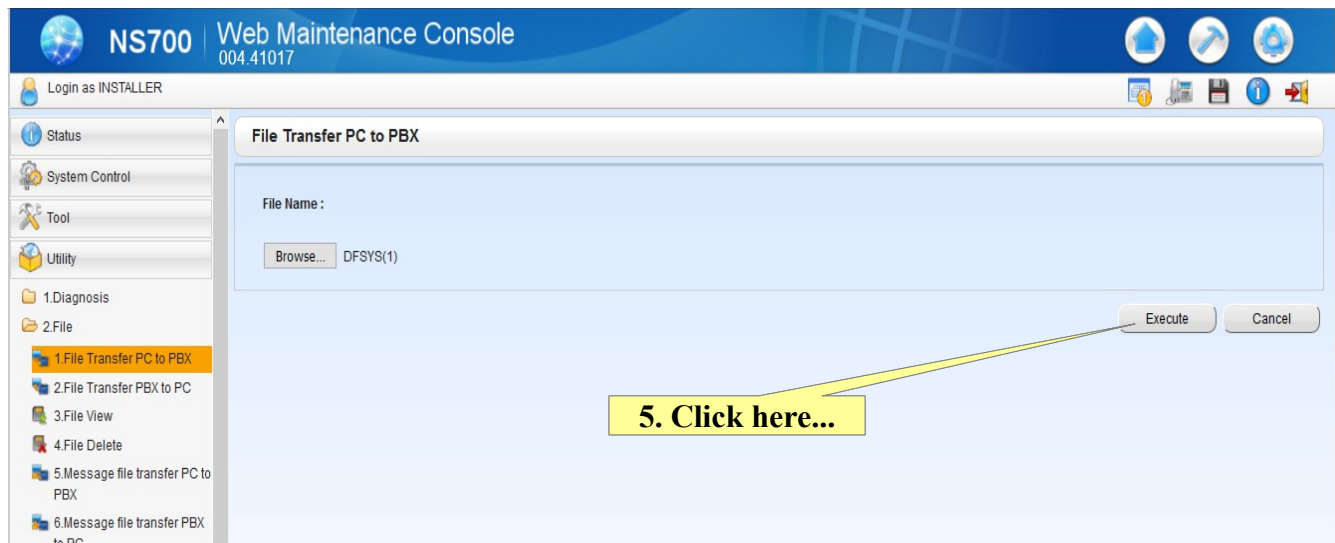
Now you can save the DFSYS file to any location of your choice on your computer.

Sending the DFSYS file to Another NS700 KSU

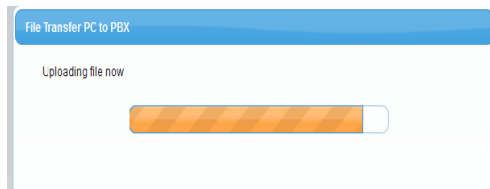


Go to the area where the DFSYS file is saved in your computer.

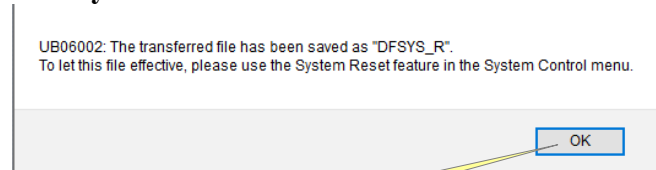




You will see this...



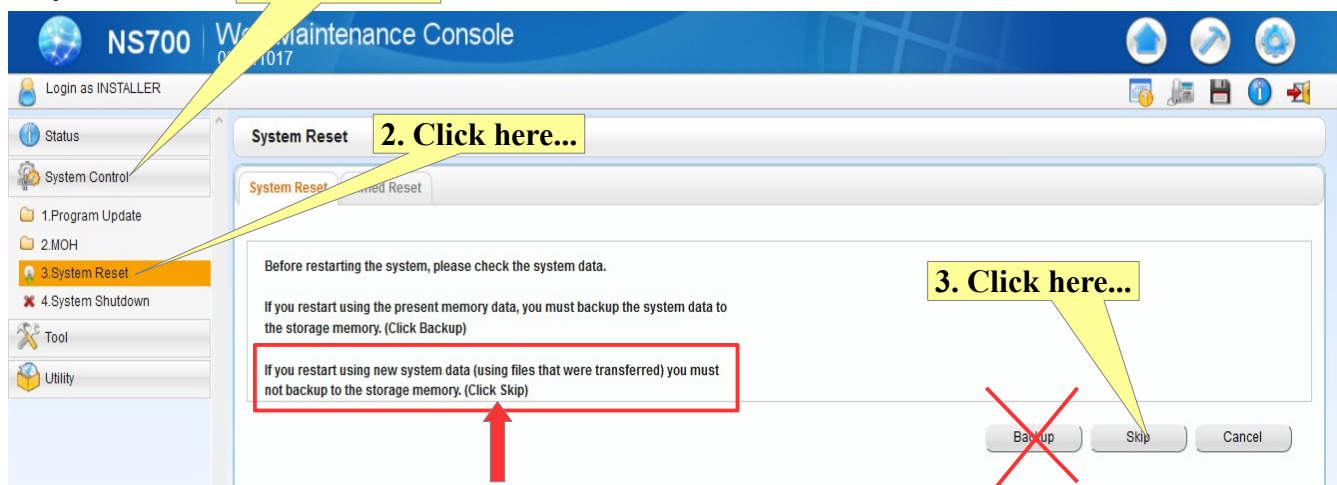
Then you will see this...



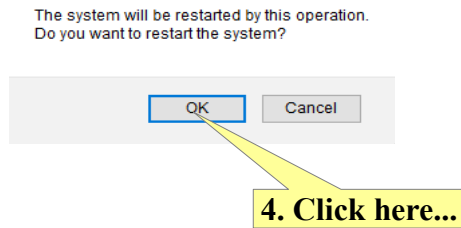
System Reset

1. Click here...

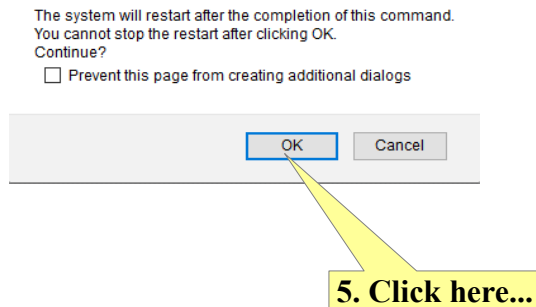
6. Click here...



You will see this...



Then this...



At this point the KSU will start to accept the saved DFSYS file.

It will be OUT OF SERVICE for several minutes depending on how big the DFSYS file is.

Mine took about 5 minutes.

When the KSU comes back into service, you should see it programmed with all the settings that were in the DFSYS file.